



DAVID W. KEHM
MANAGING PRINCIPAL

David's decades of experience in commercial architecture allows him to focus on creating and positioning HDA to grow and expand in new and existing markets. He establishes goals and objectives, implements plans and policies, and ensures profitability, quality enhancement and professional development.

EDUCATION & ASSOCIATIONS

*Kansas State University,
Bachelor of Architecture*

AIA

NCARB



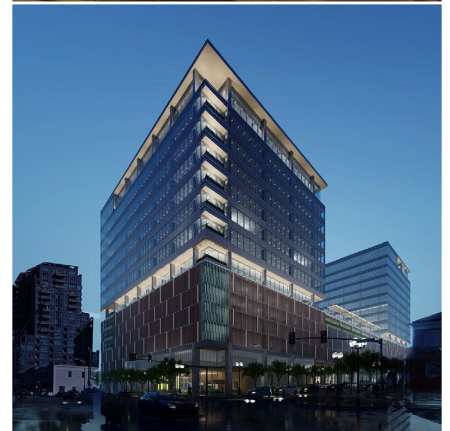
hdai.com

O: 636-449-2465 | **C:** 314-504-7488
16150 Main Circle Drive, Suite 100
St. Louis, MO 63017



OFFICE PROJECT EXPERIENCE

- AMEREN | St. Louis, MO
- BAYER | Chesterfield, MO
- BAYER | Creve Coeur, MO
- BUNGE | Chesterfield, MO
- CLIMATE CORP | Creve Coeur, MO
- DOT FOODS | Mt. Sterling, IL
- EDWARD JONES | Des Peres, MO
- EDWARD JONES | Maryland Heights, MO
- EDWARD JONES | Tempe, AZ
- FORSYTH POINTE | Clayton, MO
- GREENSFELDER HEMKER & GALE | St. Louis, MO
- LOCKTON | Creve Coeur, MO
- MCCARTHY | Des Peres, MO
- MERCY DATA CENTER | Washington, MO
- NESTLE PURINA | St. Louis, MO
- NISC | Lake St. Louis, MO
- POST HOLDINGS | Maplewood, MO
- REGIONS BANK OPERATIONS CENTER | Belleville, IL
- SACHS PROPERTIES | Chesterfield, MO
- SCOTTRADE DATA CENTER | Maryland Heights, MO
- ST. LOUIS TRUST COMPANY | Clayton, MO



LAB/RESEARCH PROJECT EXPERIENCE

- DANFORTH PLANT SCIENCE CENTER | Creve Coeur, MO
- BALL HORTICULTURAL | West Chicago, IL
- IFG | McFarland, CA

